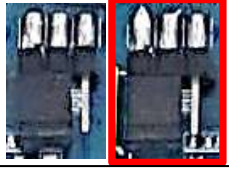


# BUTKON KAT LCD BUTKON L.O.P. LCD

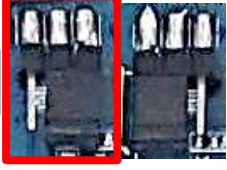
ANLAŞILMASI İÇİN ÖRNEK :  
EXAMPLE FOR UNDERSTANDING

KOD 1000 ÇIKIŞI VEREN PANO :  
PANEL THAT GIVES 1000 OUTPUT:



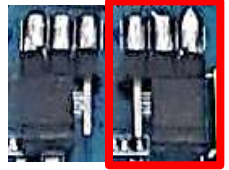
KOD  
CODE

İKAZ 100 ÇIKIŞI VEREN PANO :  
PANEL THAT GIVES 1000 OUTPUT:

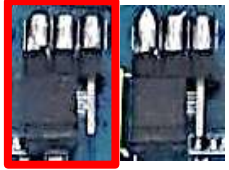


İKAZ  
SIGNAL

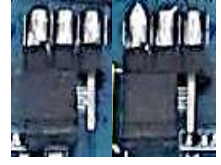
KOD 100 ÇIKIŞI VEREN PANO :  
PANEL THAT GIVES 1000 OUTPUT:



İKAZ 1000 ÇIKIŞI VEREN PANO :  
PANEL THAT GIVES 1000 OUTPUT:



1000 ÇIKIŞI VEREN PANO :  
PANEL THAT GIVES 1000 OUTPUT:



100 ÇIKIŞI VEREN PANO :  
PANEL THAT GIVES 1000 OUTPUT:



MOD SEÇİMİ - PROGRAM SELECTION ( 7 SEGMENT - GRAY- BINARY )

KAT ATAMA YAPMAK İÇİN YOUTUBE VİDEOSU İZLEYİNİZ.  
WATCH YOUTUBE VIDEO TO MAKE A FLOOR ASSIGNMENT

81/20 BUTON  
BESLEME KABLOSU  
81/20 BUTON  
POWER CABLE

31 AŞAĞI OK - DOWN

32 YUKARI OK - UP

O.O.S : OUT OF SERVICE

02 SERVİS DIŞI - O.O.S

12 MEŞGUL - BUSY

1000 / GND

100 / +24V

REVİZYON KUTUSU İKAZ ÇIKIŞLARI  
( 31, 32, 02, 12 )

INSPECTION BOX DISPLAY ARROW OUTPUTS

REVİZYON KUTUSU KOD VEYA  
7 SEGMENT ÇIKIŞLARI

INSPECTION BOX GRAY CODE OR  
7SEGMENT OUTPUTS

20 SEGMENT

2BC SEGMENT

2G SEGMENT

G SEGMENT

F SEGMENT

M4 / E SEGMENT

M3 / D SEGMENT

M2 / C SEGMENT

M1 / B SEGMENT

M0 / A SEGMENT

AAAA

AAAA

GRAY  
VEYA  
BINARY  
MOD

7  
SEGMENT  
MOD

YUKARI OK, AŞAĞI OK VE SERVİS DIŞI İKAZ'A BAĞLIDIR. UP ARROW, DOWN ARROW AND OUT OF SERVICE CONNECTED TO CAUTION.

M0, M1, M2, M3, M4 KOD'A BAĞLIDIR. M0, M1, M2, M3, M4 CONNECTED TO CODE.

TOPLAM 4 DURAĞA KADAR M0 VE M1 BAĞLAMANIZ YETERLİDİR. M2, M3 VE M4 BAĞLAMANIZA GEREK YOKTUR  
**max.4 Durak** UP TO 4 STOPS, IT IS ENOUGH TO CONNECT TO M0, M1. NO NEED TO CONNECT M2, M3 AND M4

TOPLAM 8 DURAĞA KADAR M0, M1 VE M2 BAĞLAMANIZ YETERLİDİR. M3 VE M4 BAĞLAMANIZA GEREK YOKTUR  
**max.8 Durak** UP TO 8 STOPS, IT IS ENOUGH TO CONNECT TO M0, M1, M2. NO NEED TO CONNECT M3 AND M4

TOPLAM 16 DURAĞA KADAR M0, M1, M2 VE M3 BAĞLAMANIZ YETERLİDİR. M4 BAĞLAMANIZA GEREK YOKTUR  
**max.16 Durak** UP TO 16 STOPS, IT IS ENOUGH TO CONNECT TO M0, M1, M2, M3. NO NEED TO CONNECT M4

TOPLAM 16 DURAK ÜSTÜ İSE M0, M1, M2, M3 VE M4 BAĞLANMALIDIR.  
**max.32 Durak** IF ABOVE 16 STOPS, M0, M1, M2, M3 AND M4 MUST BE CONNECTED.